

ETSApp DALI Data Import

The worldwide
standard for
home and
building control



ETSApp DALI data import

General information

This ETSApp is used to import of parameter settings for the following devices:

- N 141/03 - 03 : KNX/DALI gateway plus **N 141/03** - 5WG1 141-1AB03 - Application Program 983703
- N 141/21 - 03 : KNX/DALI gateway Twin Plus **N 141/21** - 5WG1 141-1AB21 - Application Program 983403
- N 141/31 - 03 : KNX/DALI gateway Twin **N 141/31** - 5WG1 141-1AB31 - Application Program 983303

The following procedure is recommended:

- 1) **Install** ETS App (KNX Online Shop)

- 2) **Import** manually created or software-based **CSV file**
Or
 - 2a) **Create** Excel template for the appropriate device type
 - 2b) **Fill** Excel file according to configuration
 - 2c) **Import Excel file**

- 3) if necessary, configure further parameter settings of the devices
- 4) **Download** the Device

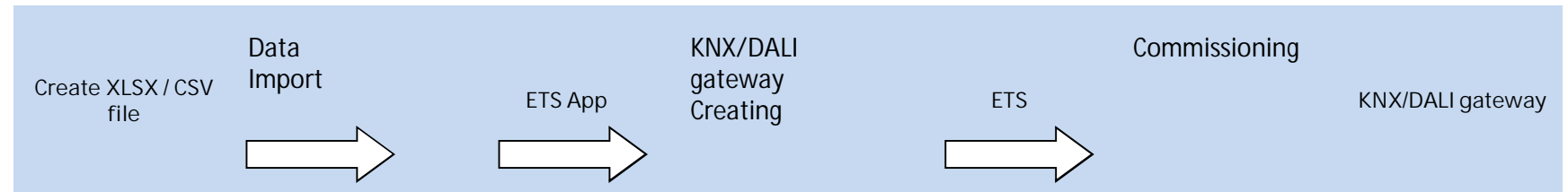
Prerequisites:

- Current version of the ETS4.2 or ETS5 is installed
- The product databases of the devices are imported in the database of ETS
- Installed Microsoft Excel 2007 or higher

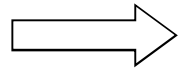
ETSApp DALI data import

Work steps

This ETSApp allows to import data from a file into the ETS to add parameterized KNX/DALI gateways in a project. It is possible to use an Excel file or a CSV file to import.



Manually Created

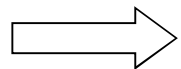


Gateway	Gateway Name	Beschreibung	DALI Statusobjekte Fehler	Gruppe Statusobjekte Schalten	Gruppe Statusobjekte Dimmwert
1.1.1	X / DALI Gateway	Schrank 1			

XLSX

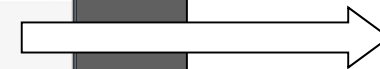
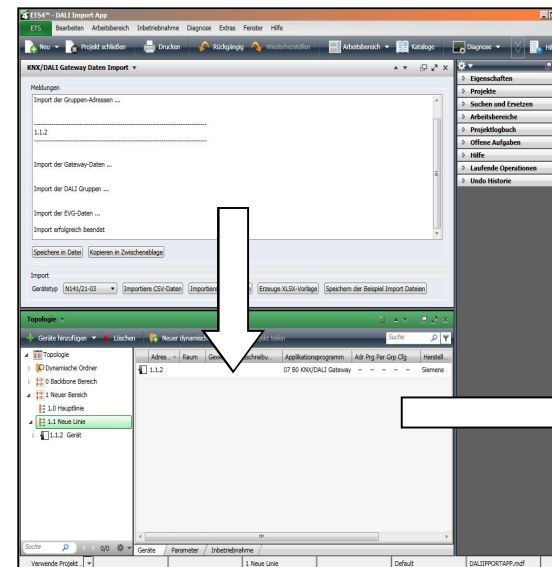
Or

External Software
(CAD, etc.)

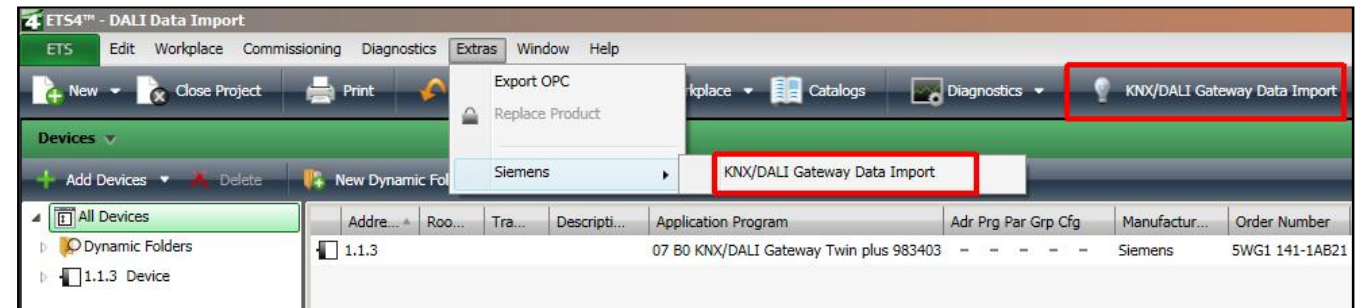
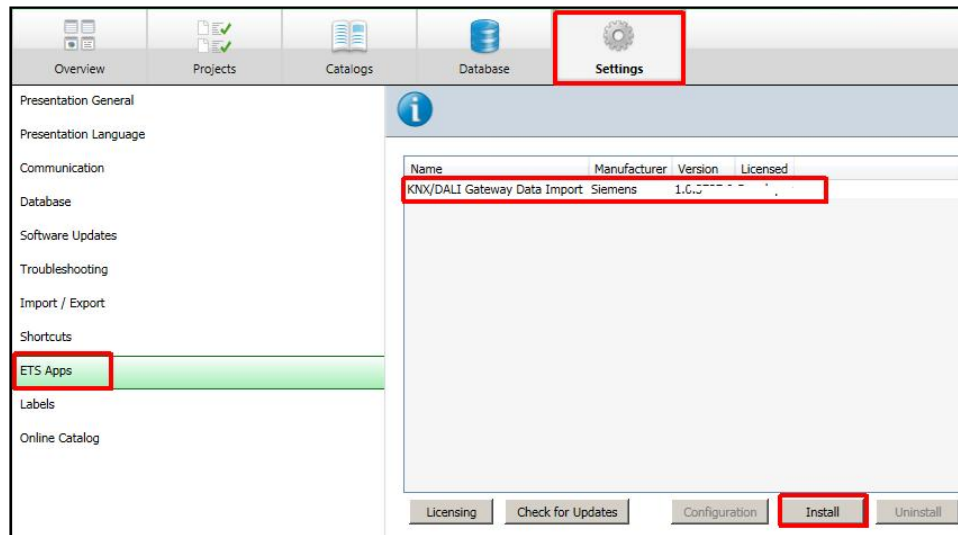


Gateway	EVG Name	DALI Line	DALI Gruppe	0 - Leuchtsta 1 - Eigenstan 2 - Einladung 3 - Neeleucht 4 - GluHlampi 5 - 10V/Konvi 6 - LED-Modi 7 - Schlicht
01.01.2001	EVG 1	1	Gruppe 1	x
01.01.2001	EVG 2	1	Gruppe 1	x
01.01.2001	EVG 3	1	Gruppe 2	x
01.01.2001	EVG 4	1	Gruppe 2	x
01.01.2001	EVG 5	1		x
01.01.2001	EVG 6	1		x
01.01.2001	EVG 7	1		x
01.01.2001	EVG 8	1		x
01.01.2002	EVG 1	1	Gruppe 1	x
01.01.2002	EVG 2	1	Gruppe 1	x
01.01.2002	EVG 3	1		x
01.01.2002	EVG 4	1		x
01.01.2002	EVG 1	2		x
01.01.2002	EVG 2	2		x

CSV



ETSApp DALI data import Installation and startup in ETS 4.2



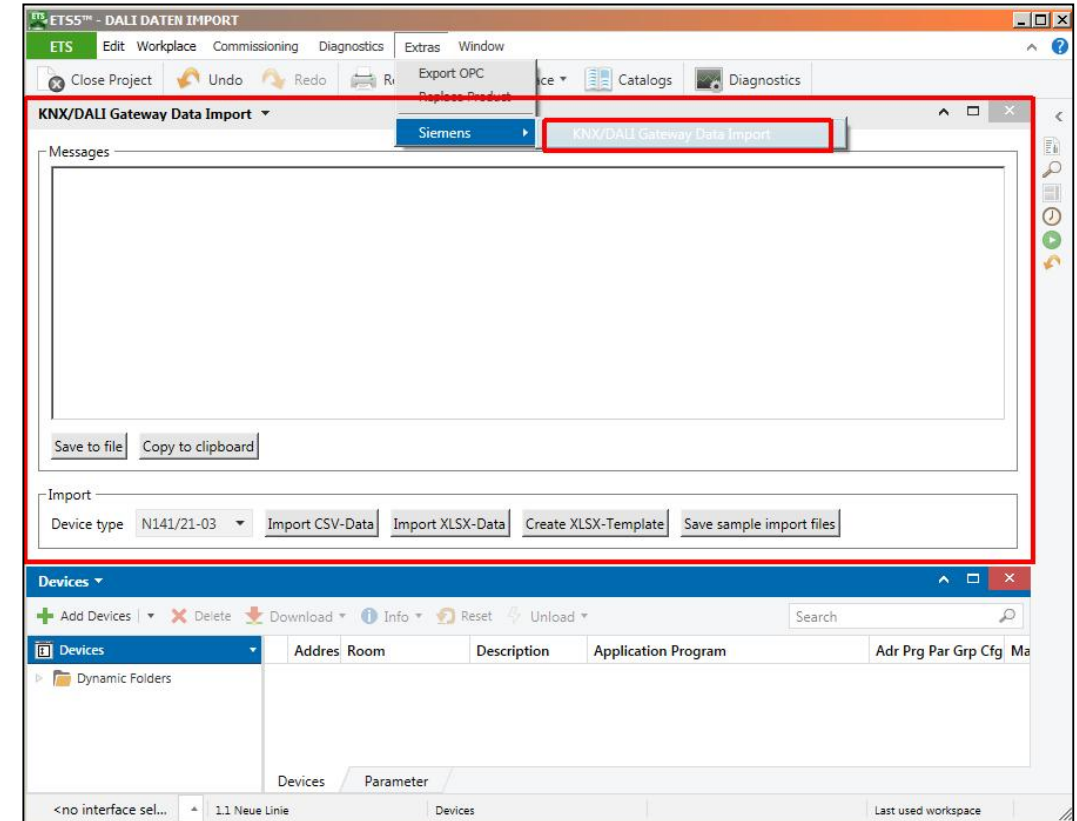
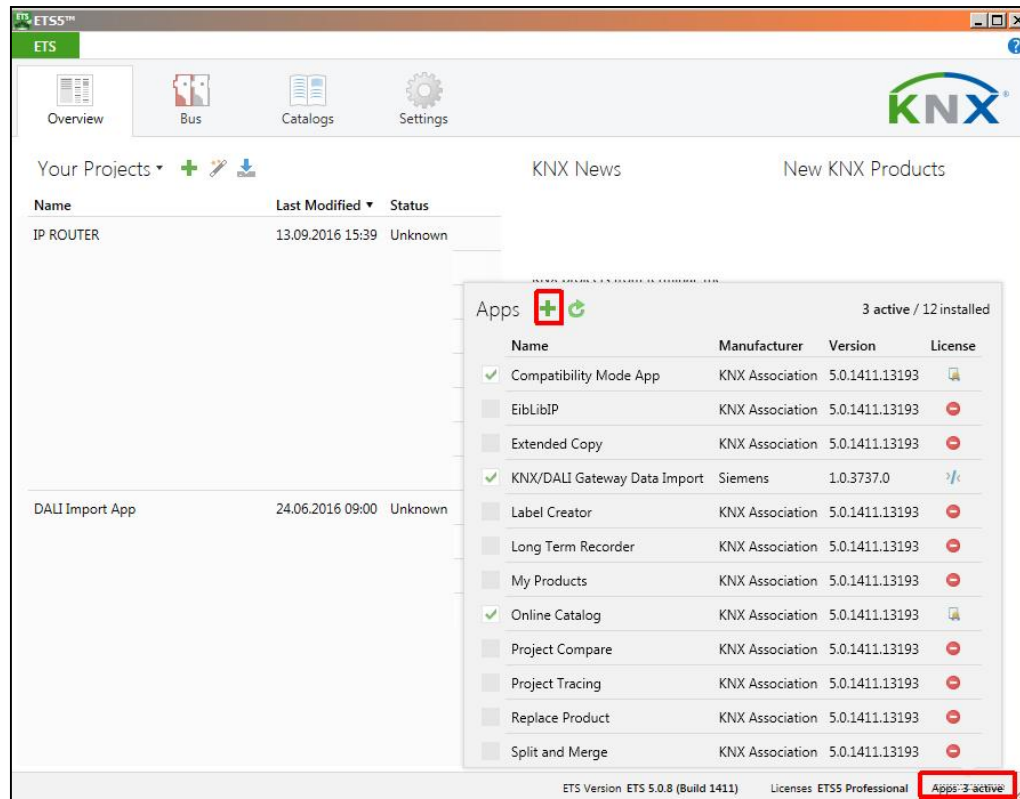
Before importing the XLSX / CSV file the applications must have be present in **product database of ETS 4.2:**

N 141/03 - 03 : KNX/DALI gateway plus **N 141/03** - 5WG1 141-1AB03 - Application Program 983703

N 141/21 - 03 : KNX/DALI gateway Twin plus **N 141/21** - 5WG1 141-1AB21 - Application Program 983403

N 141/31 - 03 : KNX/DALI gateway Twin **N 141/31** - 5WG1 141-1AB31 - Application Program 983303

ETSApp DALI data import Installation and application in ETS 5



Before importing the XLSX / CSV file the applications must have been added **once** to the project in ETS 5:

N 141/03 - 03 : KNX/DALI gateway plus **N 141/03 - 5WG1 141-1AB03 - Application Program 983703**

N 141/21 - 03 : KNX/DALI gateway Twin plus **N 141/21 - 5WG1 141-1AB21 - Application Program 983403**

N 141/31 - 03 : KNX/DALI gateway Twin **N 141/31 - 5WG1 141-1AB31 - Application Program 983303**

Unrestricted © Siemens AG 2018

ETSApp DALI data import Documentation and examples

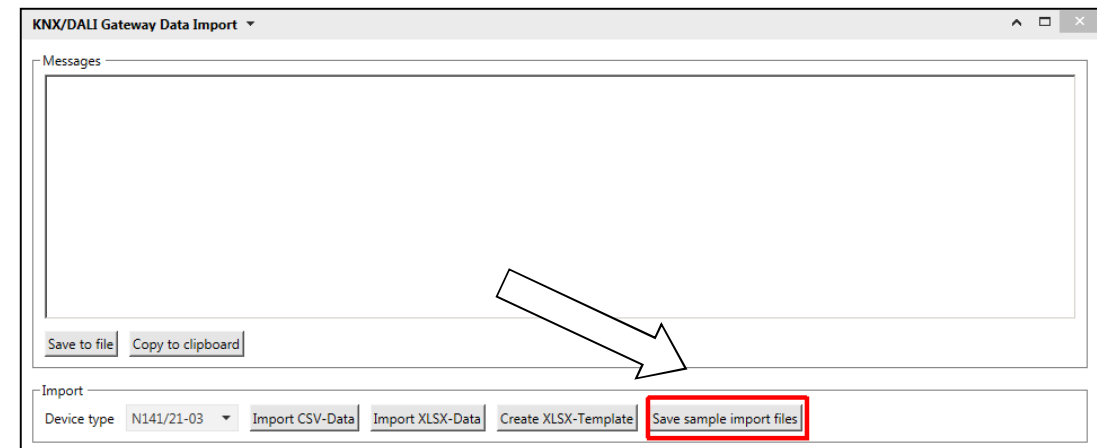
At gamma-td à Additional Software à ETSApp DALI data import are provided:

- Documentation (pdf)
- XLSX file example
- Example CSV file

Within the ETSApp the example files are available by using the button "Save the example Import files".

Limitation:

- **No data export**, only import.
- **Inconsistencies** of generated data will be **checked only limited**.
- **Copy** of cells in Excel is possible **only within the column**.
- **Check parameters** in ETS **before download**.
- **Column Names** in sheets may **not be changed**.



ETSApp DALI data import Documentation and examples



Most of the Excel cells contain a selectable menu

	A	B	C	D	E	F	G	H	I
1	Gateway	DALI Line	DALI Group	Operating mode	Minimum dimming value	Maximum dimming value	Power-on mode	Switch-on value	Dimming time at switching on / off
2	1.1.1	1	Group 1	Normal mode	3	100	Switch-on value	100	00:00:10
3	1.1.1	1	Group 2	Constant light					
4	1.1.2	1	Group 1	Normal- / night-mode	30		Switch-on value	90	
5				Normal mode					
6				Time switch 1-level					
7				Time switch 2-level					

ETS App - KNX/DALI Gateway Data Import

8.1.3 Sheet „DALI Groups“

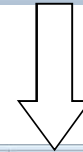
Type	Column - table DALI Groups	Parameter in ETS	Range of values	Default value
M	Gateway	Gateway	phys. KNX Adresse	e.g. 1.1.1
M	DALI Line	DALI Line	A, B, 1, 2	
M31	DALI Group	DALI Group	(max. 25 characters)	(max. 25 characters)
O	Operating mode	Operating mode	Normal mode Normal- / night-mode Constant light Time switch 1-level Time switch 2-level	Normal mode
O	Minimum dimming value	Minimum dimming value	0%-100%	10%
O	Maximum dimming value	Maximum dimming value	0%-100%	100%
O	Power-on mode	Power-on mode	Switch-on value Last dimming value Dimming value at switch off	Switch-on value
O	Switch-on value	Switch-on value	0%-100%	
O	Dimming time at switching on / off	Dimming time at switching on / off from min. - 100% [hh:mm:ss]	00:00:00 – 15:00:00	00:00:00
O	Dimming Time Brighter/Darker [s]	Dimming time at dimming brighter/darker from min. - 100% [hh:mm:ss]	12:00:01 AM – 15:00:00	00:00:10
O	Dimming Time at dimming value	Dimming time at dimming value from min. - 100% [hh:mm:ss]	00:00:00 – 15:00:00	00:00:00
O	Switch-on time 1	Switch-on time 1 [hh:mm:ss]	00:00:00 – 15:00:00	00:02:00
O	Switch-on time 2	Switch-on time 2 [hh:mm:ss]	00:00:00 – 15:00:00	00:00:30
O	Dimming Value after Switch-on time 1	Dimming value after switch-on time 1	0%-100%	5%
O	Behavior in case of failure KNX voltage or DALI voltage	Behavior in case of failure KNX voltage or DALI voltage	No action Switch on value Maximum dimming value Minimum dimming value Dimming value at emergency illumination Switch off	No action

The appropriate format to use in Excel cells without selectable menu is described in the Technical Product Information

ETSApp DALI data import Documentation and examples

Group addresses can be set up and linked to objects with the Excel file

	X	Y	Z
1	Behaviour after burn-in	switching GroupAddress	dimming GroupAdd
2	like before burn-in	1/1/1	
3	like before burn-in	1/2/1	
4			



	A	B	C	D
1	Group Address	Group Address Name	Group Address Description	Group Address Comment
2	1/1/1	Group 1 switch		
3	1/2/1	Group 2 switch		
4				

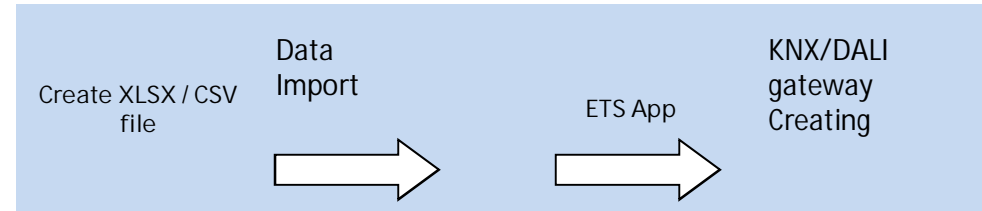


ETSApp DALI data import

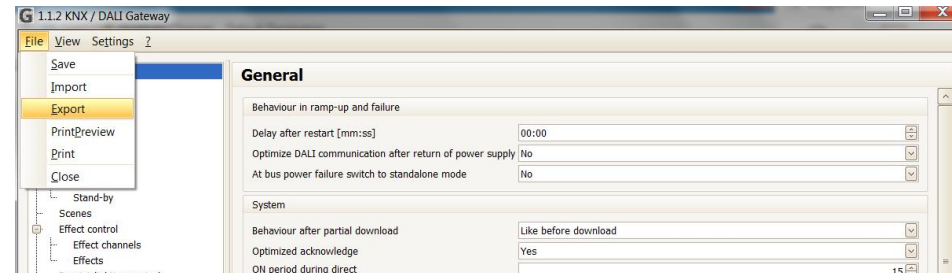
38	A, Group 1, switching	on / off	Group 1 switch	1/1/1	1 bit
39	A, Group 1, dimming	brighter / darker			4 bit
40	A, Group 1, dimming value	8-bit value			1 byte
41	A, Group 1, dimming value /...	dimming value + time			3 bytes
42	A, Group 1, status switching	on / off			1 bit
43	A, Group 1, status dimming v...	8-bit value			1 byte
45	A, Group 2, switching	on / off	Group 2 switch	1/2/1	1 bit
46	A, Group 2, dimming	brighter / darker			4 bit

ETSApp DALI data import Workaround for Application Program 983x04 and 983x05

1.- Import the data to the Application Program 9837x3



2.- Export the parameters from Application Program 9837x3 to a .xml file



3.- Import & convert the .xml file into the Application Program 9837x4 or 9837x5



Gamma Converter Tool or GAMMA Converter App
must be already installed

Contact

SIEMENS
Ingenuity for Life

Jorge Sanchis Barcenilla
Product Manager
BT CPS SRA PROD BLC

Siemensstr. 10
93055 Regensburg
Germany

